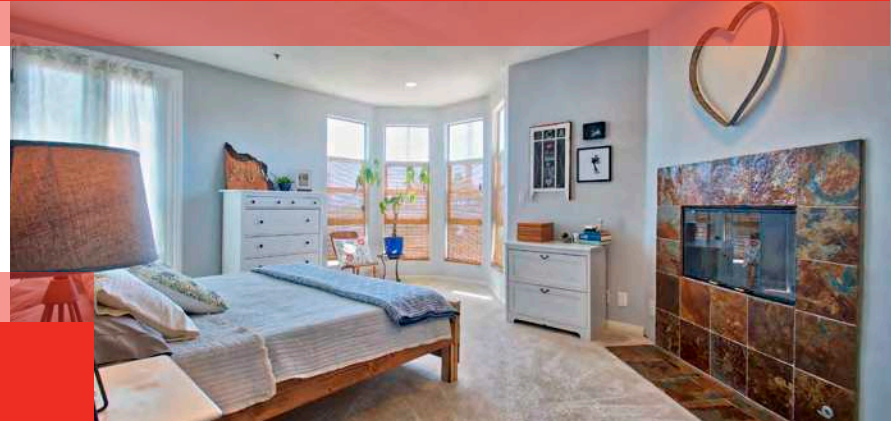
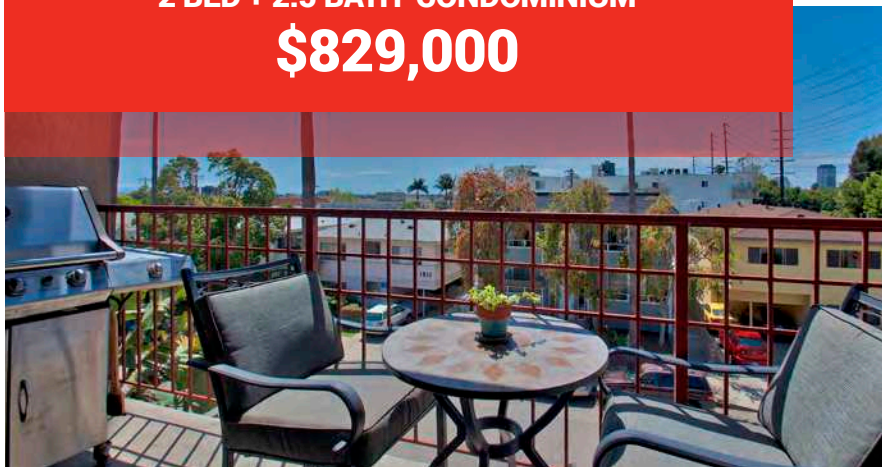


STUNNING WEST L.A. CONDO WITH DRAMATIC VIEWS



1506 CORINTH AVE., #301
2 BED + 2.5 BATH CONDOMINIUM
\$829,000



Front facing 2 bed + 2.5 bath w/only 1 common wall // Built in 1992 w/ approx. 1500 sqft // Sweeping sunlight throughout the floor-to-ceiling windows
Beautiful sunset, ocean & greenbelt views // Bamboo floors & recessed lights // Double pane windows
Fabulous open cooks kitchen w/ granite counter tops // Large breakfast bar counter & stainless steel appliances // Central heat & AC
Greenhouse window in kitchen & lots of cupboard space // Slate fireplaces in living room & master suite // Great balcony to enjoy your barbecue & views
Bedroom suites on opposite ends of the condo // Double door entry to spacious master bedroom w/ sitting area
Beautiful bay like windows in master suite // Condo is wired for surround sound speakers // Large walk-in closets in bedrooms
Master bath w/ double sink & separate spa tub & shower // Separate laundry room w/ basin & storage
2 side-by-side security parking w/ private storage room // Very close to the vibrant Sawtelle Blvd shopping & dining

FOR MORE INFO ON THIS PROPERTY VISIT 1506CORINTH.COM & GARYLIMJAP.COM



GARYLIMJAP

O: 310.586.0339 | C: 310.430.0818

www.garylimjap.com | garylimjap@gmail.com

facebook flickr YouTube twitter LinkedIn



©2017 Coldwell Banker Real Estate LLC. Coldwell Banker® is a registered trademark licensed to Coldwell Banker Real Estate LLC. An Equal Opportunity Company. Equal Housing Opportunity. Owned By a Subsidiary of NRT LLC. Broker does not guarantee the accuracy of square footage, lot size or other information concerning the condition or features of property provided by seller or obtained from public records or other sources, and the buyer is advised to independently verify the accuracy of that information through personal inspection and with appropriate professionals. If your property is currently listed for sale, this is not intended as a solicitation.

CALBRE #: 00927151